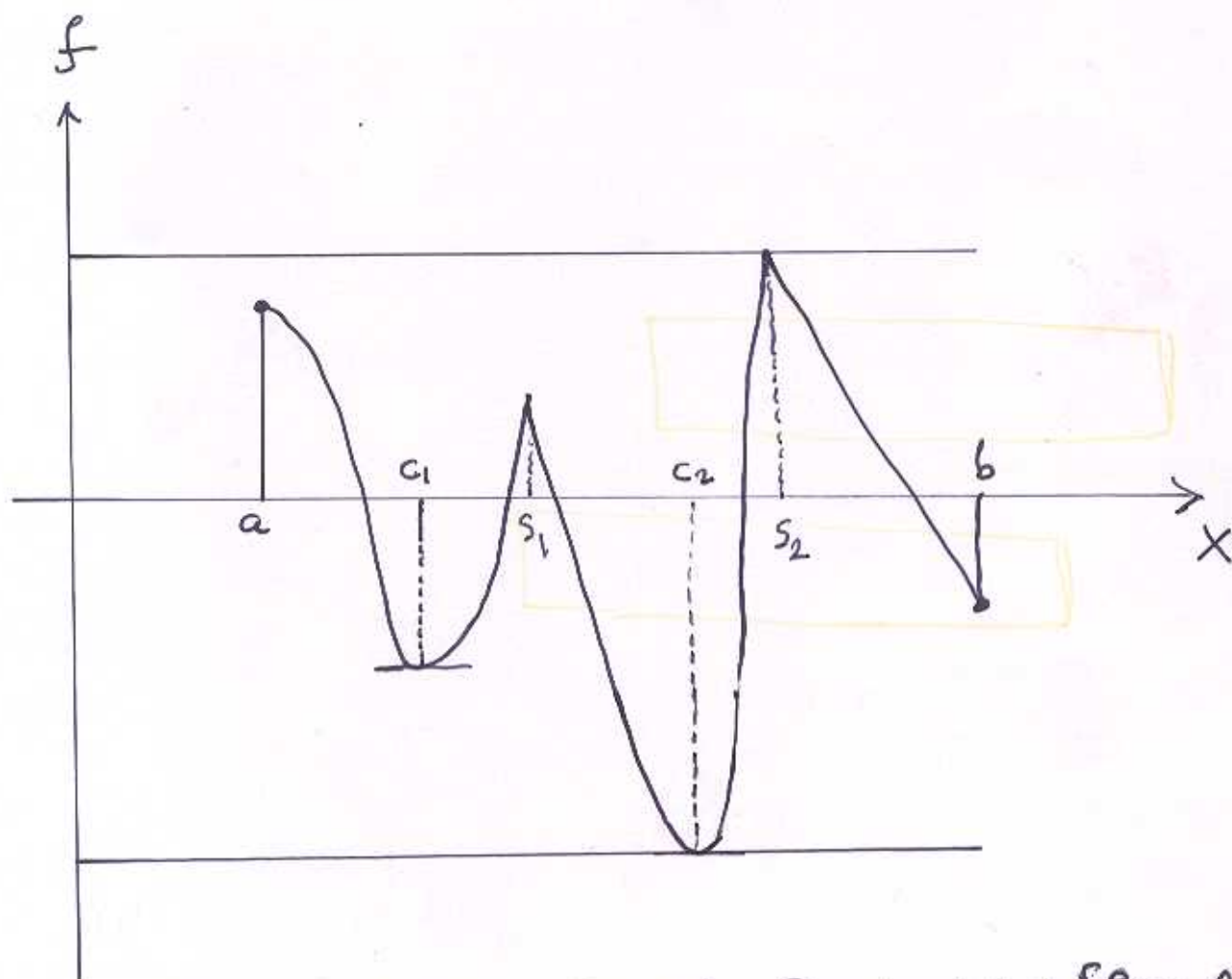


Optimization Terms



Singular points $\{s_1, s_2\}$ Singular values $\{f(s_1), f(s_2)\}$

Critical points $\{c_1, c_2\}$ Critical values $\{f(c_1), f(c_2)\}$

End points $\{a, b\}$ End values $\{f(a), f(b)\}$

Local max points $\{a, s_1, s_2\}$

Local min points $\{c_1, c_2, b\}$

Global min value $f(c_2)$

Global max value $f(s_2)$